

EBP.B

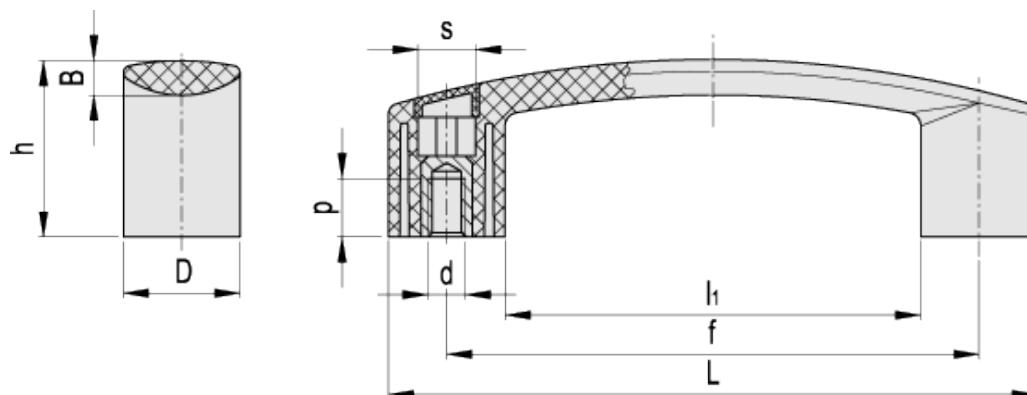
Bridge handles
back mounting



ELESA Original design



ERGOSTYLE®



technical informations

Material

Glass-fibre reinforced polyamide based (PA) technopolymer. Resistant to solvents, oils, greases and other chemical agents.

Colour

Grey-black, matte finish.

Caps

Technopolymer in Ergostyle colours, matte finish; supplied assembled, press-fit assembly, removable by a screwdriver. Available also as accessories sold separately (see caps table).

Standard execution

Brass bosses, threaded blind holes.

Features and applications

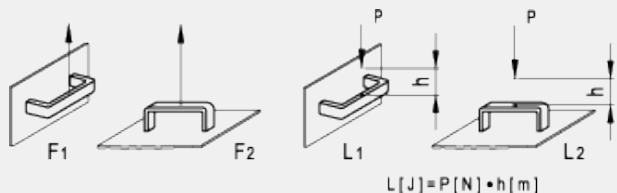
EBP.B back mounting handles can be assembled in pairs opposed to EBP. front mounting handles (Fig. 1).



Fig.1

Technical data

Tensile stress and impact strength: F1, F2, L1 and L2 values reported in the table are the result of breaking tests carried out with the appropriate dynamometric equipment under the test conditions shown in the figure with ambient temperature.



* Complete with colour index, example: 260121-C2 EBP.110 B-M6-C2

C1 C2 C3 C4 C5 C6
 RAL7021 RAL2004 RAL7035 RAL1021 RAL5024 RAL3000

Standard Elements		Main dimensions							Threaded bosses		F ₁	F ₂	L ₁	L ₂	Weight
Code	Description	L	f	D	h	B	l ₁	s	d _{6H}	p	[N]	[N]	[J]	[J]	g
260121-*	EBP.110 B-M6-*	116	93.5±0.5	22	35	7.5	72	10	M6	12	2000	1500	8	3	45
260220-*	EBP.140 B-M6-*	144	117±0.5	26	39	8.5	92	10	M6	12	2700	1800	10	4	70
260221-*	EBP.140 B-M8-*	144	117±0.5	26	39	8.5	92	13	M8	13	2700	1800	10	4	65
260256-*	EBP.150 B-M8-*	159	132±0.5	27	42	9.5	105	13	M8	13	2700	1800	11	4	82
260321-*	EBP.180 B-M8-*	178	150±1	28	45	9.5	122	13	M8	13	2700	1500	12	5	98
260421-*	EBP.200 B-M8-*	208.5	179±1	28.5	51	9.5	150.5	13	M8	13	2200	1500	16	9	108
Code	Description	Caps for													
29830-*	ECA.B0-*	EBP.110													
29831-*	ECA.B1-*	EBP.140 EBP.150 EBP.180 EBP.200													

* Complete with colour index (C1, ..., C6).

This product had the following design awards:



ELESA and GANTER models all rights reserved in accordance with the law. Always mention the source when reproducing our drawings.

